

KERATIN PLUS SMOOTHING TREATMENT IN 6 EASY STEPS



■ 1 Shampoo



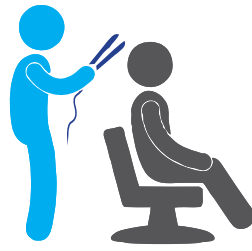
■ 2 Drying



■ 3 Treatment



■ 4 Post-treatment drying



■ 5 High temperature flat iron



■ 6 Rinse and conditioning or Color Deluxe

KERATIN PLUS EXTRA STRONG SMOOTHING TREATMENT

- **Benefits:** restores shine, reduces volume, leaving hair beautifully easy to comb, even at home.
DO NOT APPLY treatment to stripped hair or where there is a high percentage of white hair.

■ STEP 1 SHAMPOO



Before starting treatment, always place the disposable cape supplied over the customer's shoulders.
Apply sufficient quantity of KERATIN PLUS SHAMPOO to damp hair and massage in gently, ensuring that the product forms plenty of foam. Follow the instructions for applying the shampoo, according to the table below and hair type.



KERATIN PLUS SHAMPOO APPLICATION TIME AND METHOD TABLE

Hair type	Number of applications	Recommendations and application time*	WARNINGS
Natural curls/frizzy	4 applications of KERATIN PLUS SHAMPOO	6/8 minutes application time for last shampoo	Do not rinse completely between shampoo applications (leave approximately half the foam on the hair). Only rinse completely after the last shampoo.
Normal structure/dyed/up to 50% highlights or white hair	2 or 3 applications of KERATIN PLUS SHAMPOO	2/3 minutes application time for last shampoo	Do not rinse completely between shampoo applications (leave approximately half the foam on the hair). Only rinse completely after the last shampoo.
Stripped and severely damaged ends	1 application of KERATIN PLUS SHAMPOO	Apply Revital Mask, cover with film and leave on for 5 minutes under a heat source.	We recommend using EVOLUTION PRO.

* application time is for information only and varies according to diagnosis.



KERATIN PLUS SHAMPOO

This is the basic pH shampoo specifically designed to prepare the cuticles to receive KERATIN PLUS treatment to smooth and reduce hair volume.

Free from SLS and SLES, allergens and parabens, it contains extracts of olive oil, coconut oil, Aloe Vera and Green Coffee.

■ STEP 2 DRYING



Briefly towel-dry hair and then spread a few drops of SERUM through the wet hair paying particular attention to damaged ends; dry according to the following instructions and depending on the hair type.

DRYING RECOMMENDATIONS TABLE

Hair type	Recommendations
Natural	Dry hair completely using a hair-dryer in a natural fashion.
Dyed or lightened up to 50%	Dry hair up to 70%.
Lightened up to 70% or severely stripped	Keep ends damp.



SERUM

This is a professional product specifically designed to protect hair from the high temperatures of flat irons and to ensure a shiny mane that is easy to comb.

Contains valuable extracts of Argan Oil, Wheat Germ Oil and Linseed Oil, which help protect hair.

■ STEP 3 TREATMENT



- Wear protective gloves and treat in a well-ventilated room.
- Use a comb to divide hair into 4 large sections.
- Pour approximately 30 grams of KERATIN PLUS TREATMENT into the specific plastic bowl. For shoulder-length hair, pour approximately 40 grams of product into the bowl; for long hair, pour 60 grams of product.
- Start from the back of the neck, separating out small locks of hair and applying KERATIN PLUS TREATMENT using a stiff brush, starting 0.5 cm from the skin and running it through to the ends.
- Massage each lock of hair in your hands to facilitate the product's penetration into the hair fibres. If ends are damaged or split, massage thoroughly to facilitate absorption.

Warning: DO NOT COVER HEAD WITH CAPS OR SIMILAR ITEMS.

APPLICATION RECOMMENDATIONS TABLE

Hair type	Leave-on time	WARNINGS
Afro-type natural or dyed frizzy	30 minutes.	Excess product will weigh the hair down, making it difficult to dry and then use the flat iron.
Afro-type natural or dyed naturally curly and frizzy	35 minutes.	Excess product will weigh the hair down, making it difficult to dry and then use the flat iron.
Lightened up to 50%	20 minutes (we recommend using EVOLUTION PRO).	
Lightened more than 70% or severely stripped	15/20 minutes (we strongly recommend using EVOLUTION PRO).	

KERATIN PLUS TREATMENT



Contains no formaldehyde and glutaraldehyde. This is a professional product used to smooth hair and eliminate frizz. Thanks to a successful mix of carbohydrates and proteins it is able to permanently modify the hair's structure at high temperatures, strengthening and smoothing it to leave it silky smooth with a beautiful glossy shine.

Organic acids, hydrolysed wheat proteins and surfactants derived from olive oil.

■ STEP 4 POST-TREATMENT DRYING



- Comb hair without rinsing.
- Blow dry hair completely with a brush.
- Before using the flat iron, check that the hair is well-brushed to eliminate any excess product.
- If hair is rough, apply a few drops of SERUM, spreading it through the hair with a comb and hands.

■ STEP 5 HIGH TEMPERATURE FLAT IRON



- Before using the flat iron, carefully check that hair is properly dry.
- Replace the customer protective cape with a new one.
- Adjust the temperature of the J PREMIUM - JEAN PAUL MYNÉ hair flat iron, according to the instructions given in the TEMPERATURE TABLE.
- The choice of temperature is essential in obtaining excellent treatment results.
- Separate the hair into 4 large locks and then divide into very small sections, starting from the back of the neck, using a fine-toothed heat-resistant tail comb.
- Hold the lock of hair taut with the comb, run the flat iron from the root to the end, each time checking the result to ensure that the temperature is appropriate and run through more times in the more difficult areas (back of the neck/regrowth/frontal area).



TEMPERATURE TABLE

After having ironed the first few locks (back of the neck), note the colour of the hair; if the colour changes by more than 1 shade, reduce the temperature by 10°/20° until colour stability or at most a change by 1 shade is guaranteed.

Hair type	Iron temperature	Number of strokes of iron required
Natural curly and/or frizzy	230°C or lower	At least 10/12 depending on how the first few locks react
Dyed/treated with other chemical products or highlights	From 180° to 220°C	10/12 times depending on how the first few locks react
Stripped/two-tone dyed/fine	From 180° to 210°C	6/7 times depending on how the first few locks react
White hair or hair with a high percentage of white hair	Do not exceed 180°C (we recommend using Evolution Pro)	Evaluate depending on how the first few locks react

J PREMIUM FLAT IRON



The black titanium J PREMIUM flat iron ensures maximum comfort when straightening hair, keeping temperature constant whilst also featuring automatic switch-off and ergonomic grip; the J PREMIUM flat iron is the professionals' choice for JEAN PAUL MYNÉ treatments.

■ STEP 6 RINSE AND CONDITIONING OR COLOR DELUXE



- Rinse thoroughly with warm water. Eliminate excess water and towel-dry.
- Apply Revital Mask to wet hair "as-is" or mixed with colour pigment in equal quantities or with a semi-permanent dye if wishing to brighten the colour. Cover hair with a cap and leave on under a heat source for 5/7 minutes.
- Rinse with warm water, towel-dry hair and add a few drops of Vetiver oil.
- Finally blow dry with a brush.
- If ends are stiff or damaged, apply Thermo Repair and flat iron the ends.
- Style to complete according to customer's requests.



REVITAL MASK

Suitable for all hair types, this is an integral part of the patented hair smoothing and frizz-removing procedure. It ensures an anti-static effect, leaving hair soft and smooth. This is a professional treatment able to repair, strengthen and nourish hair fibres and bulbs deep-down.

It contains extracts of stem cells from a specific variety of Swiss apple, silk proteins and sweet almond extract, which penetrate deep within, powerfully hydrating and restoring the hair.